

Church Facilities Study Process

Each church study is unique to the congregation, but the following describes a typical study process:

1

Kickoff Meeting with Building Committee

- Review project process and timeline
- Discuss involvement of other stakeholders
- Gather available drawings and other documents for the existing facility
- Review stakeholder goals
- Plan for visioning session

2

Conduct a Congregational Visioning Session

- Utilize post-it note exercise to gather input on future uses and development.



4

Explore similar facilities with Building Committee



5

Conduct on-site investigation of existing facility

- Develop base drawings
- Discuss deferred maintenance issues
- Observe unique site features
- Review code compliance and barrier-free issues



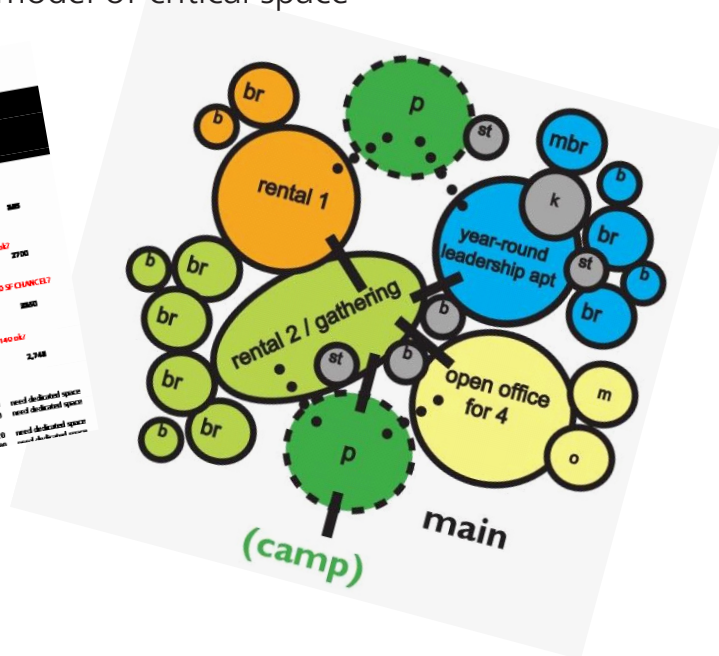
6

Meet with Building Committee to understand space needs

- Discuss space and adjacency requirements
- Brainstorm possibilities for uses of the property
- Develop conceptual layouts and preliminary budget
- Review how budget relate to financial capacity
- Develop three-dimensional model of critical space

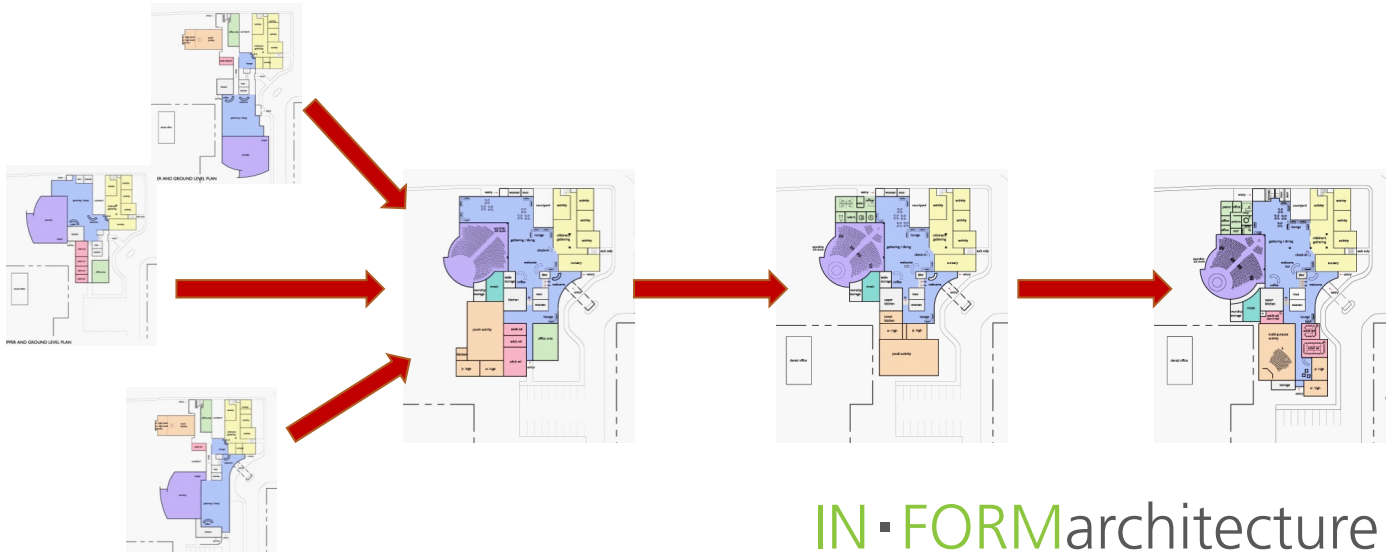
Space Needs Analysis
Cornstock CIC 24-Sep-14

Space Description	Existing		Needed		Total S	Notes		
	Qty	Area	Qty	Area				
Entry / Public Areas								
Waiting Area	1	250	1	250	250			
Coats	1	225	1	225	225			
Table Seating	2	200	2	400	400			
Sub-total		1411		1411				
Gathering								
Gathering (Multi-use)	1	4150	1	220	3,300	180 sq CLANCEL		
Sub-total		4700		220	3,300	180 sq CLANCEL		
Worship								
Worship, incl 1000 of church	1	550	1	190	2,660	140 sq CL		
420 SF					198	198		
Sub-total		2570		190	2,660	140 sq CL		
Fellowship								
Fellowship	1	198	1	12	35	428	need dedicated space	
Fellowship Hall Storage					35	420	need dedicated space	
Sub-total		427		12	35	420	need dedicated space	
Education Ministry								
Nursery/Toddlers	1	1	1	12	35	420	need dedicated space	
Preschool					12	35	420	need dedicated space
Children's Worship / Catech					12	35	420	need dedicated space
2,3,A / Children's worship					12	35	420	need dedicated space
etc.					12	35	420	need dedicated space



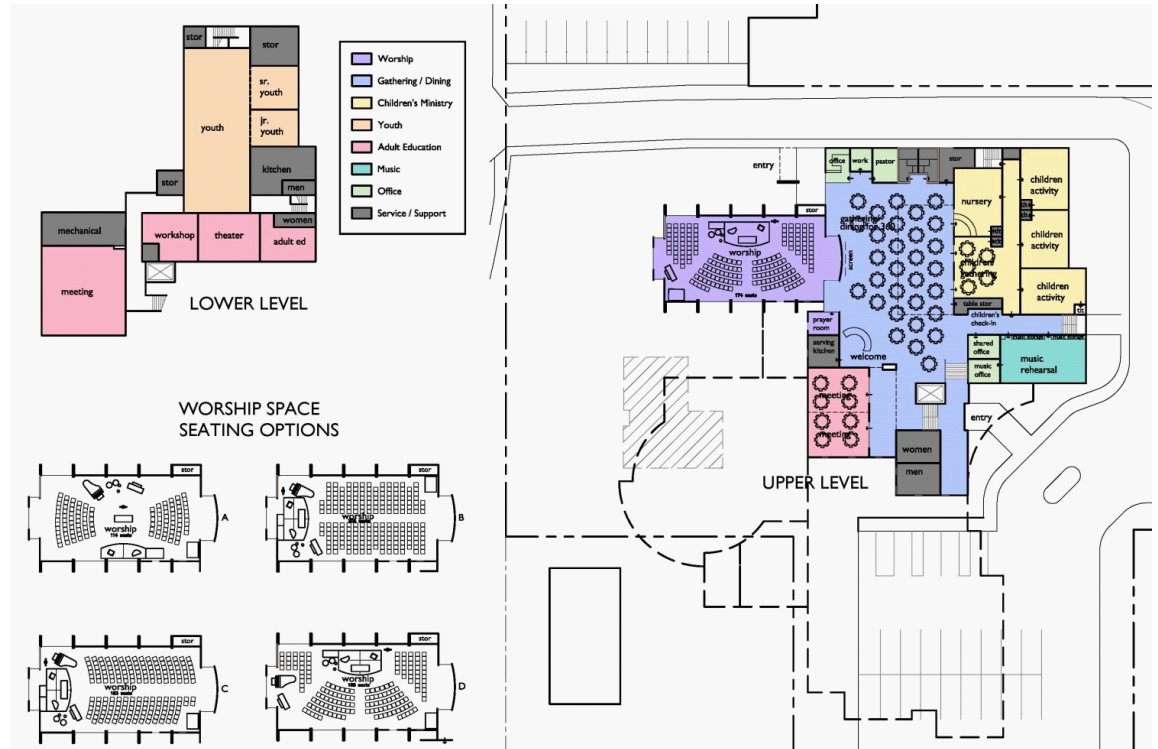
Design Process

- Touch base with project goals
- Consider original architectural style
- Consider space needs
- Consider financial capacity (ie. balance dream with reality)
- Consider cost estimates
- Consider phasing strategies



7

- **Conceptual design is ready to share**
- Preliminary concept plans & exterior and/or interior sketches
- Preliminary concept aligns with project goals
- Preliminary concept aligns with financial capacity and budget
- Phasing strategies in place



8

Conduct Town Hall Meeting

- Review data gathered to date
- Present project goals
- Review conceptual layouts and preliminary budget
- Receive input



9

Meet with Building Committee

- Discuss congregational input and how to incorporate into study
- Finalize plans and sketches

10

Finalize Study and Prepare Report

Report to include:

- Introduction and narrative about the process
- Documentation from the visioning session
- Word Clouds
- Information from tours of similar facilities
- Conceptual Plan(s)
- Sketches
- Budget information

