

# IN·FORMarchitecture

providing professional design services through community-focused, client-centered, and consensus-minded collaboration

## residential project menu

### The Appetizer:

Beginning with a site visit and an exchange of ideas, images, and space needs, and followed by several rounds of concept design and review, our first course includes floor plans, 3d color images, and an outline of the project scope. With these documents, the builder you select can prepare a ball-park estimate. The process is designed from start to finish to help you establish a direction for your project that fits you and your goals.

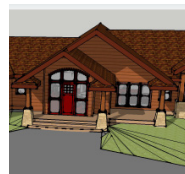
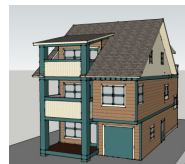
Small: \$4,000

Medium: \$5,500

Large: \$7,000

### Between courses:

When you are ready to continue with the project, construction drawings will be needed to get a precise estimate, to obtain a permit, and for construction. Any changes you desire would be incorporated into the documents at this point. We'd be happy to assist you in selecting the entree option that suits you best!



## Entree Option #1: Light Fare

We offer a **basic package** that assumes that you have selected a builder and that you have enough time and interest to work with him/her closely throughout the construction project to make decisions and changes as desired. Included in the **basic** set of construction documents are the following:

- Site plan as needed for zoning approval
- Dimensioned floor plans
- Exterior elevations
- Critical wall sections
- General notes

This set of documents will be adequate for obtaining a somewhat-refined estimate, and a building permit.

**New construction:**

**\$4.50 per finished square foot**

**Renovation/addition:**

**\$5.00 per finished square foot**

## A la carte

Additional services are available:

- Electrical layouts
- Mechanical system design
- Structural engineering if required
- Window selections
- Material selections
- Construction details
- Energy-compliance report

We would be happy to provide a specific estimate for additional services as desired.

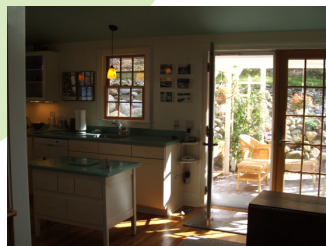


## Entree Option #2: Full Plate

The **comprehensive package** puts more on paper before construction begins, resulting in fewer questions and changes during construction. Included in the **comprehensive** set of construction documents are the following:

- Site plan as needed for zoning approval
- Dimensioned floor plans
- Exterior elevations and critical wall sections
- Window and door selection and schedules
- Stair section
- Interior Elevations
- Critical details for built-ins, interior details, etc.
- Selection of an interior finish "palette"
- Electrical lighting layout
- Coordination with structural engineer
- Coordination with mechanical and electrical subs
- Energy compliance report
- Residential specification
- 6 site visits during construction

**New construction:** \$6.00 per finished square foot  
**Renovation/addition:** \$6.50 per finished square foot



## Entree Option #3: Whole Enchilada

The **custom package** includes a design development phase in which we explore ways to fully integrate the design into all facets of the house prior to creating the construction documents. This involves study of options for interior and exterior finishes, windows and doors, lighting layout and fixtures, indoor/outdoor connections, energy efficiency strategies, and unique construction methods and details. Fully-developed construction documents include the following:

- Site plan as needed for zoning approval
- Landscape design and plant selection
- Dimensioned floor plans
- Exterior elevations
- Window and door selection and schedules
- Multiple wall sections
- Stair section and details
- Interior Elevations
- Extensive details for built-ins, interior trim, etc.
- Selection of interior finishes
- Electrical lighting layout
- Selection of light fixtures
- Structural engineering as needed
- Residential specification
- 8 site visits during construction
- LEED FOR HOMES SUBMITTAL (if desired)

**New construction:**

**\$7.00 per finished square foot**

**Renovation/addition:**

**\$7.50 per finished square foot**



**IN • FORM** architecture

401 e. michigan ave, suite 100

kalamazoo, michigan 49007

269.270.3331

visit us @ [www.informarchitect.com](http://www.informarchitect.com)

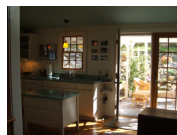
# references

-Here is what our clients say about us...

## Johnson

"Three qualities, I think, distinguish an effective architect: an ability to both listen and question until a mutual understanding about the project is reached; a feel for the site and cultural setting of the project; and an ability to interact as a partner with contractors and suppliers so that the project's goals are kept in focus for the duration of the work. In our experience, InForm Architecture possesses those qualities in their approach to their work."

- Colton Johnson, Homeowner



## Thomas

"It was an absolute pleasure working with InForm Architecture. They listened to our ideas and created plans that stretched those ideas in creative and functional ways that were even more than we thought possible with the space. The team at InForm Architecture were consistently professional, patient, timely and fun to work with. We recommend their work with our highest regard."

- Linnaea and John Thomas, Homeowners



IN • FORM architecture

401 e. michigan ave, suite 100  
kalamazoo, michigan 49007  
269.270.3331

visit us @ [www.informarchitect.com](http://www.informarchitect.com)



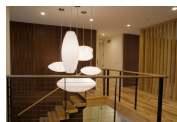
# references

-Here is what our clients say about us...

## Jepson

"InForm Architecture did a fantastic job of bringing enlightened design concepts to our complete gut remodel based on our style profile. The team also followed through in a very timely manner on the complete set of architectural drawings for the remodel. They have a point-of-view, but are very collaborative as well. I would recommend their services. My family and I are fans."

- Steve & Kathy Jepson, Homeowners



## DeWeerd

"My husband and I have been working with InForm to plan our home. They have been very reliable, quick to reply to communication, and are well organized. They listened very well and helped us determine what we wanted while trying to work within budget constraints. Their ability to see the big picture has been essential for creating the house plan we are excited to build. They have helped us communicate more effectively with our general contractor and have had helpful suggestions for local resources to aid in finishing decisions."

- Carol & Mike DeWeerd, Homeowners



IN ■ FORM architecture

401 e. michigan ave, suite 100  
kalamazoo, michigan 49007  
269.270.3331

visit us @ [www.informarchitect.com](http://www.informarchitect.com)

# references

-Here is what our clients say about us...

## Yelton

"I have utilized Inform Architecture for 3 projects. The first project was to update and remodel our existing law office to accommodate our growth. The second project was to expand and modernize my existing 2,300 square foot ranch house (with 3 bedrooms) into an approximately 4,500 square foot two-story house (with 6 bedrooms). The third project was to design a 4,500 square foot office space for me and our other 10+ eDiscovery attorneys. For each one of these projects, I have most appreciated Inform Architecture's creativity and can-do attitude. I have also appreciated the fact that I will always get a quick response to my questions/concerns and that staying within budget and timeline are as important to them as they are to me."

- Jay & Lori Yelton, Homeowners



## Sanderson

"Mary Whittaker Duncan, who currently works with Inform Architecture, designed a beautiful lake house for me. In spite of rigid road setbacks, Mary was able to maximize the space and plan the perfect house for me. I was very happy with her performance throughout the process."

- Tanya Sanderson, Homeowner



IN • FORM architecture

401 e. michigan ave, suite 100  
kalamazoo, michigan 49007  
269.270.3331

visit us @ [www.informarchitect.com](http://www.informarchitect.com)